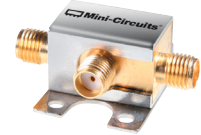


Coaxial Frequency Mixer

ZX05-C42MH+

Level 13 (LO Power +13 dBm) 1000 to 4200 MHz



CASE STYLE: FL905

Connectors Model
SMA ZX05-C42MH-S+

Maximum Ratings

Operating Temperature	-40°C to 85°C
Storage Temperature	-55°C to 100°C
RF Power	200mW
IF Current	40mA

Permanent damage may occur if any of these limits are exceeded.

Coaxial Connections

LO	1
RF	2
IF	3

Features

- rugged construction
- small size
- low conversion loss
- high L-R isolation
- protected by US Patents 6,790,049 & 7,027,795

Applications

- cellular
- PCS
- instrumentation
- satellite communication

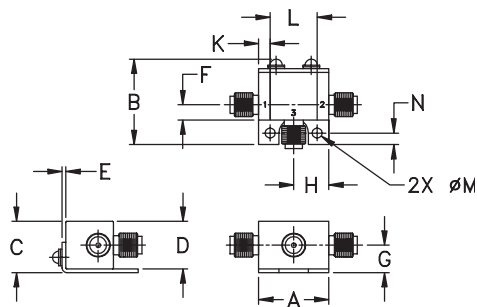
+RoHS Compliant
The +Suffix identifies RoHS Compliance. See our web site for RoHS Compliance methodologies and qualifications

Electrical Specifications (T_{AMB}=25°C)

FREQUENCY (MHz)	CONVERSION LOSS (dB)	LO-RF ISOLATION (dB)		LO-IF ISOLATION (dB)		IP3 at center band (dBm)			
		Typ.	Min.	Typ.	Min.				
LO/RF f _L -f _U	Mid-Band X̄ σ	Total Range Max.				Typ.			
1000-4200	DC-1500	6.2	0.1	8.9	35	15	20	10	16

1 dB COMP: +9 dBm typ.

Outline Drawing



Outline Dimensions (inch/mm)

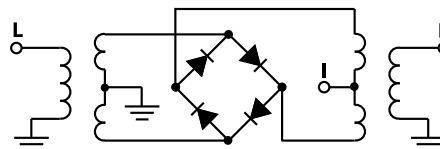
A	B	C	D	E	F	G
.74	.90	.54	.50	.04	.16	.29
18.80	22.86	13.72	12.70	1.02	4.06	7.37

H	J	K	L	M	N	wt
.37	--	.122	.496	.106	.122	grams
9.40	--	3.10	12.60	2.69	3.10	20.0

Typical Performance Data

Frequency (MHz)	Conversion Loss (dB)	Isolation (dB)		VSWR RF Port (:1)	VSWR LO Port (:1)
		L-R (dB)	L-I (dB)		
RF	LO	LO +13dBm	LO +13dBm	LO +13dBm	LO +13dBm
1000.10	1030.11	5.54	34.65	22.99	2.57
1164.20	1194.21	5.75	42.95	25.97	3.33
1328.31	1358.32	5.65	45.06	24.23	3.36
1492.41	1522.42	5.52	41.94	21.25	3.20
1656.51	1686.52	5.86	37.88	21.97	2.96
1820.61	1850.62	5.56	39.58	20.83	2.49
1984.72	2014.73	5.74	36.47	22.17	2.29
2148.82	2178.83	5.69	35.35	22.92	2.29
2312.92	2342.93	6.00	34.88	19.04	2.64
2559.07	2589.08	6.38	40.91	18.95	2.91
2723.18	2753.19	6.54	41.04	19.81	3.33
2887.28	2917.29	6.61	43.02	19.85	3.18
3051.38	3081.39	6.05	39.81	21.17	2.88
3215.49	3245.50	6.05	36.34	21.37	3.14
3379.59	3409.60	6.11	32.23	22.06	3.12
3543.69	3573.70	6.37	29.28	22.17	3.22
3707.79	3737.80	6.65	26.88	23.67	3.50
3871.90	3901.91	7.05	24.86	25.01	3.97
4036.00	4066.01	7.51	24.53	21.27	3.87
4200.10	4170.09	7.37	24.55	18.50	3.78

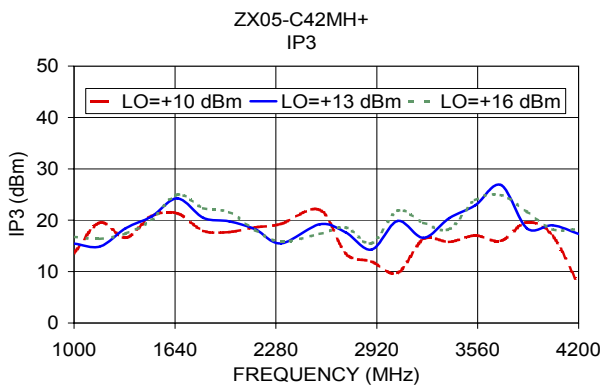
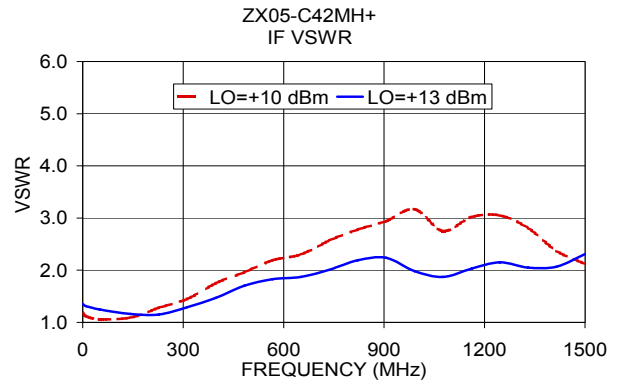
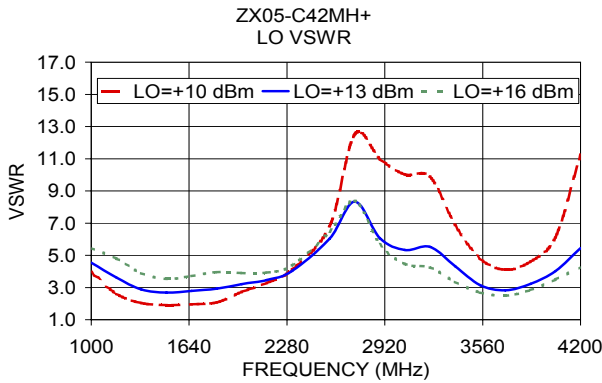
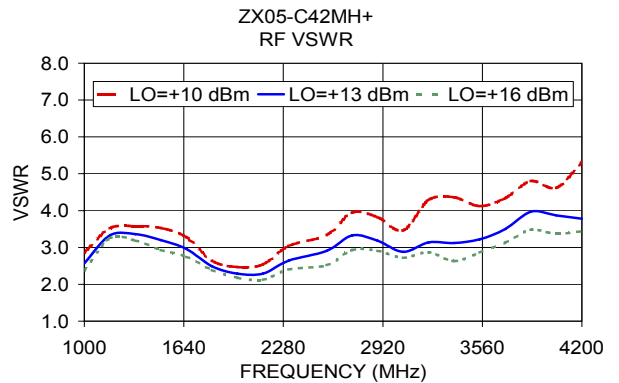
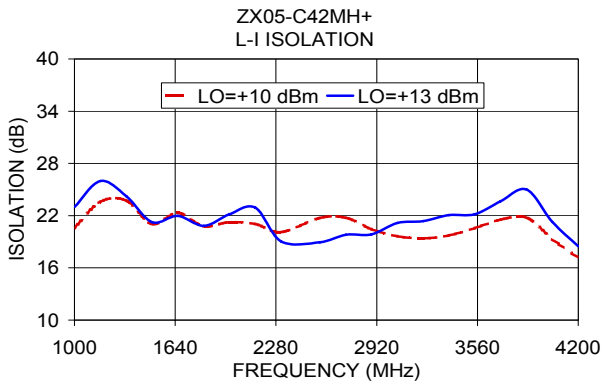
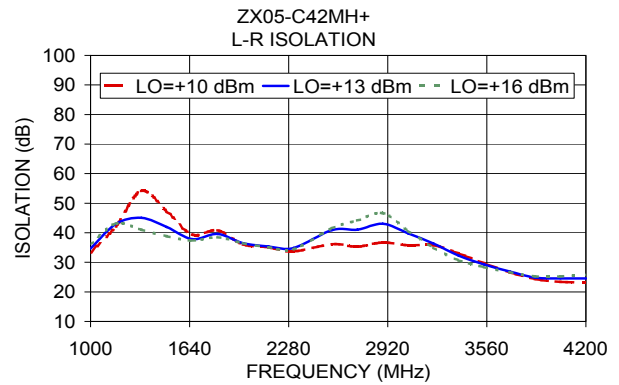
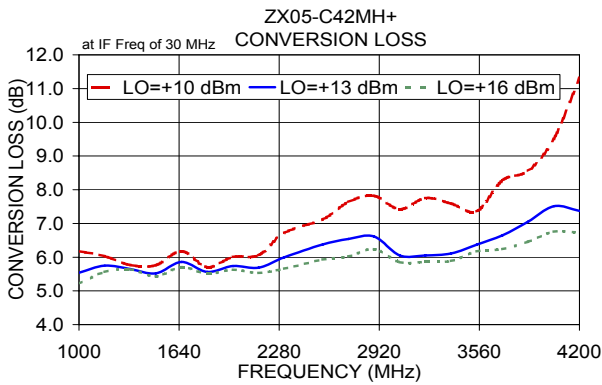
Electrical Schematic



Notes

- Performance and quality attributes and conditions not expressly stated in this specification document are intended to be excluded and do not form a part of this specification document.
- Electrical specifications and performance data contained in this specification document are based on Mini-Circuit's applicable established test performance criteria and measurement instructions.
- The parts covered by this specification document are subject to Mini-Circuits standard limited warranty and terms and conditions (collectively, "Standard Terms"); Purchasers of this part are entitled to the rights and benefits contained therein. For a full statement of the Standard Terms and the exclusive rights and remedies thereunder, please visit Mini-Circuits' website at www.minicircuits.com/MCLStore/terms.jsp





Notes

- A. Performance and quality attributes and conditions not expressly stated in this specification document are intended to be excluded and do not form a part of this specification document.
- B. Electrical specifications and performance data contained in this specification document are based on Mini-Circuit's applicable established test performance criteria and measurement instructions.
- C. The parts covered by this specification document are subject to Mini-Circuits standard limited warranty and terms and conditions (collectively, "Standard Terms"); Purchasers of this part are entitled to the rights and benefits contained therein. For a full statement of the Standard Terms and the exclusive rights and remedies thereunder, please visit Mini-Circuits' website at www.minicircuits.com/MCLStore/terms.jsp

